

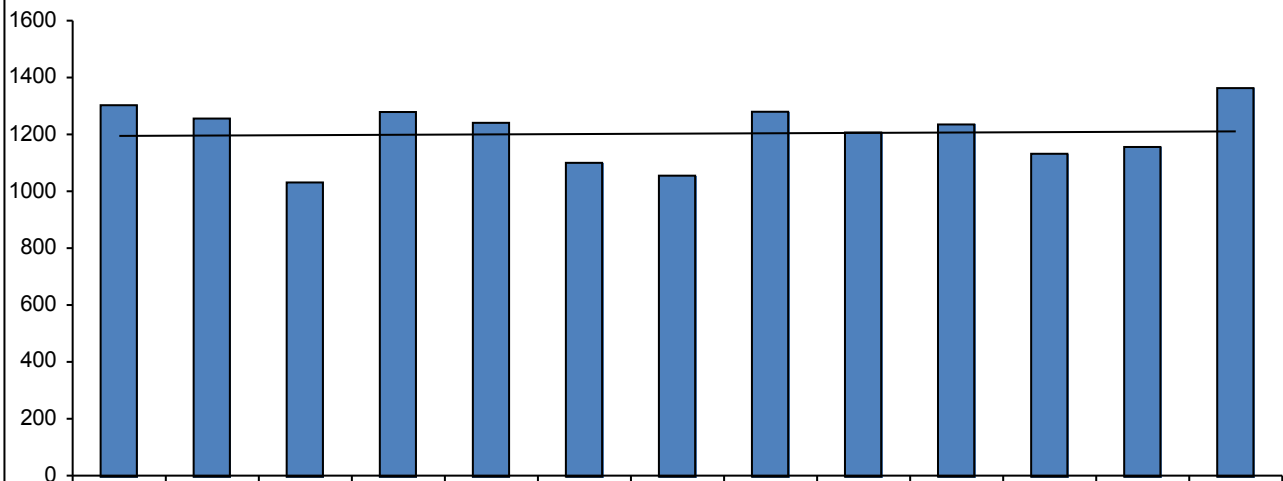
# Children and Families Monthly Dataset - Key Performance Measures

Jun 2015

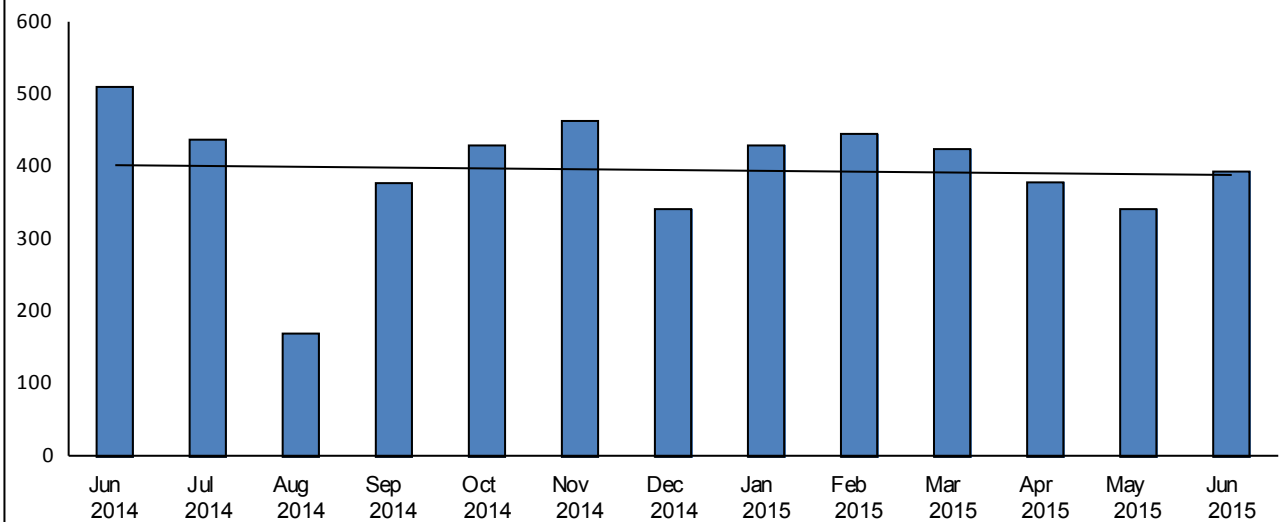
Number

Percentage

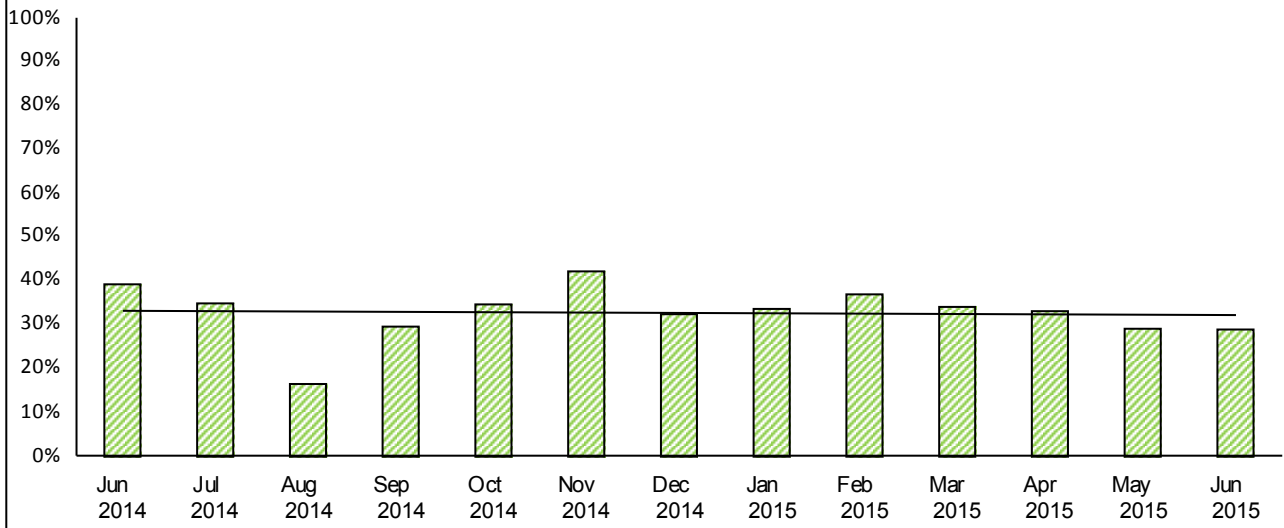
### M1 - Number of contacts received (includes contacts that become referrals)



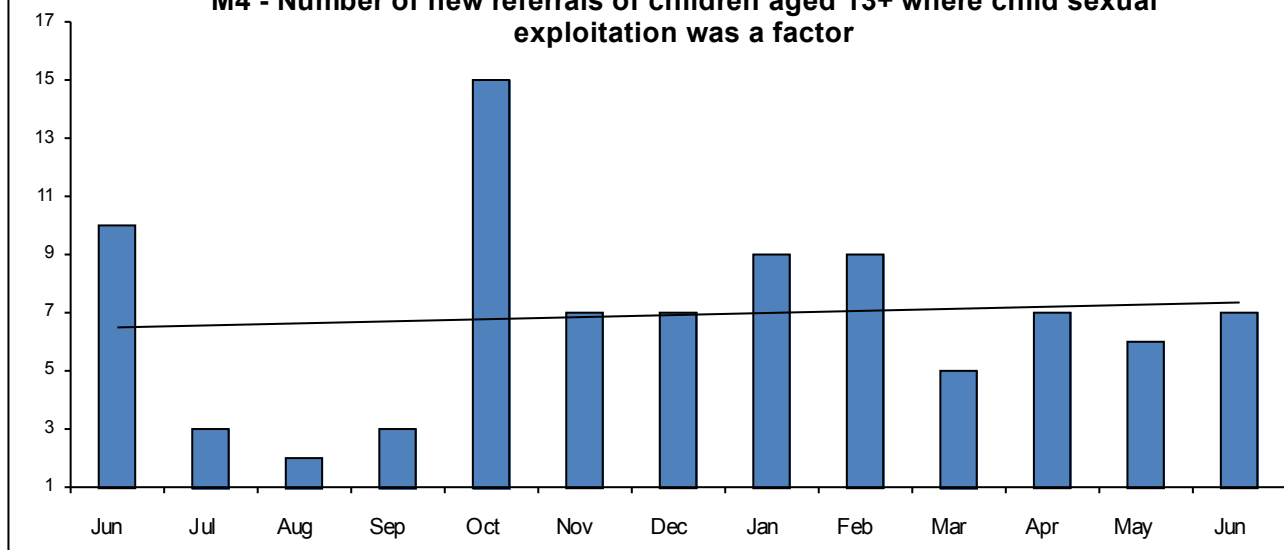
### M2 - Number of new referrals of Children In Need



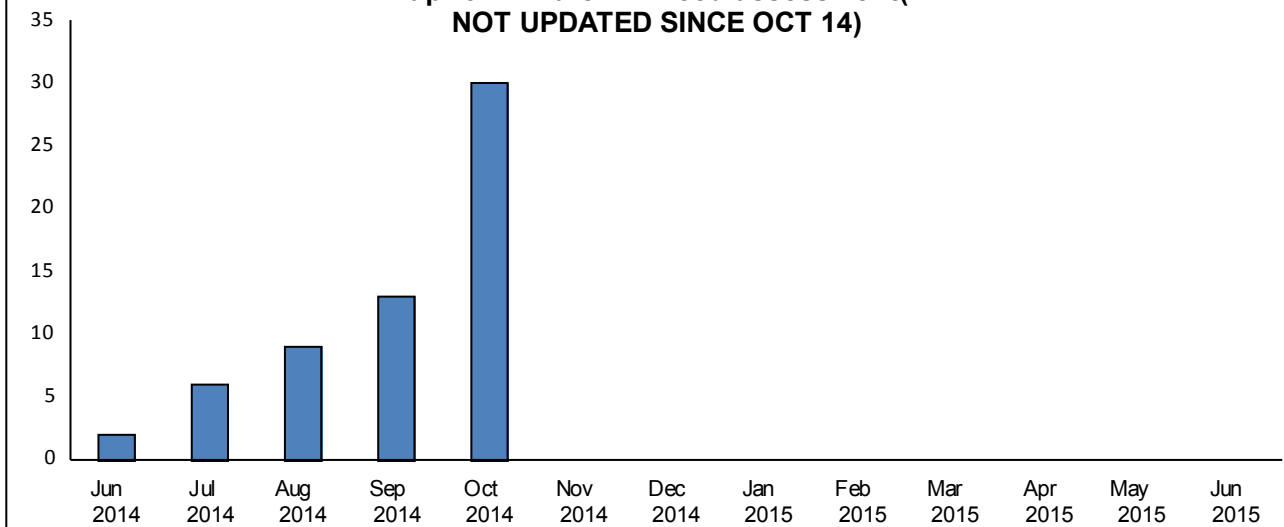
**M3 - Percentage of all contacts that become new referrals of Children In Need**

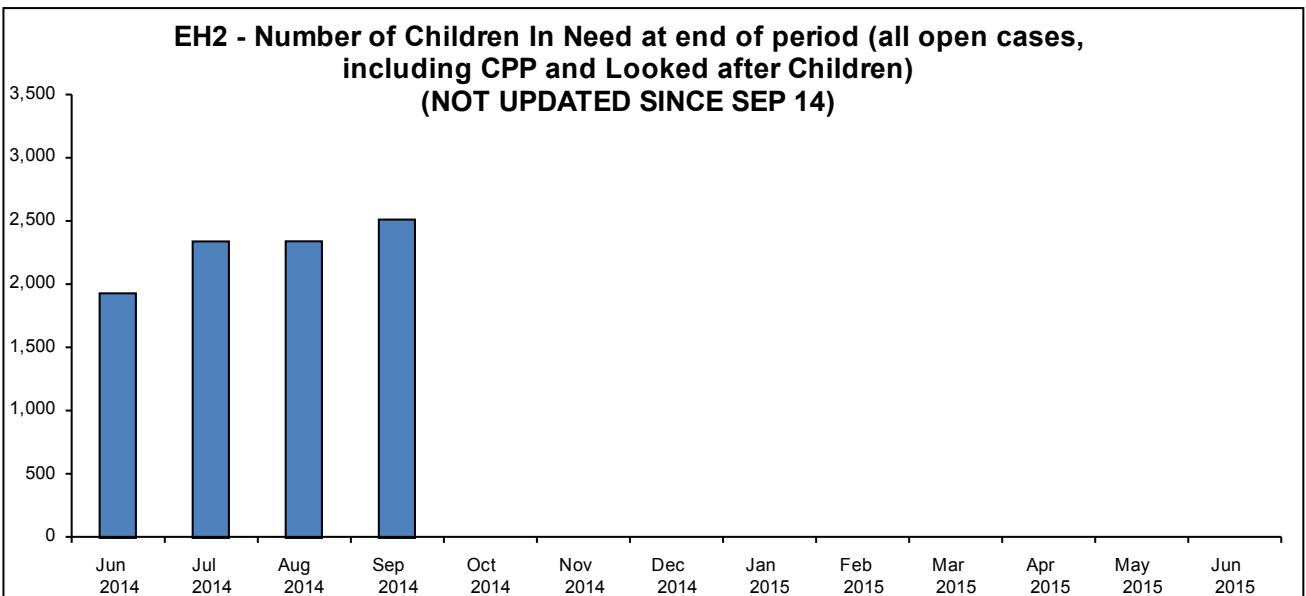
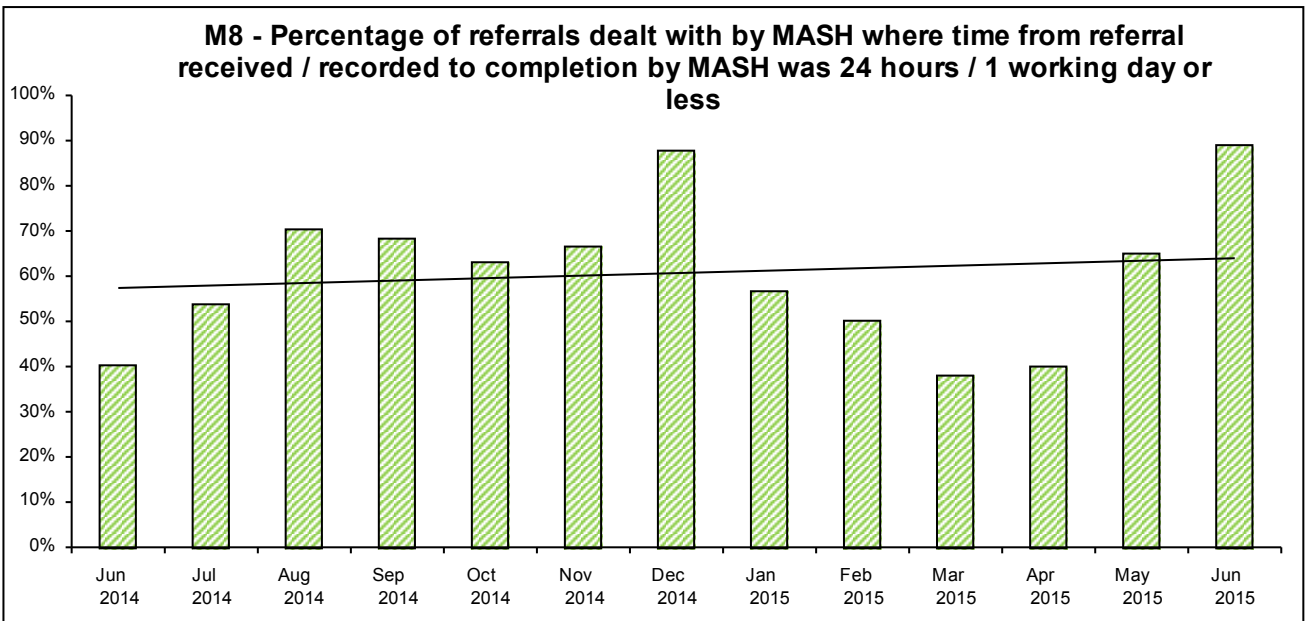
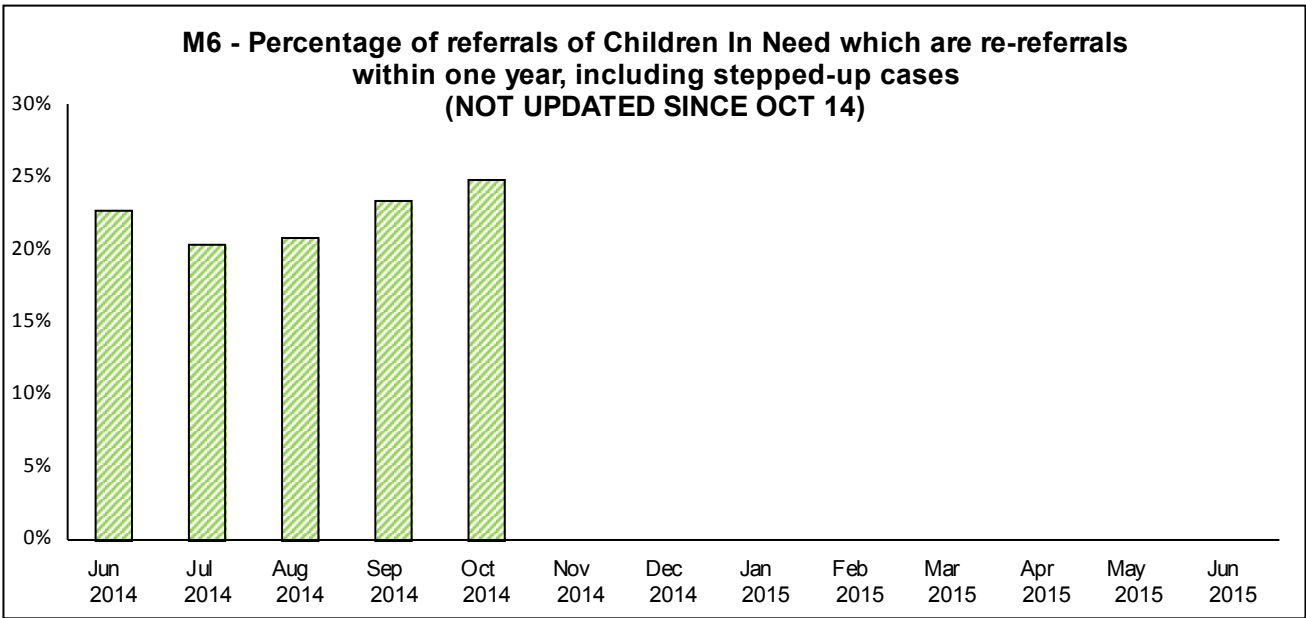


**M4 - Number of new referrals of children aged 13+ where child sexual exploitation was a factor**

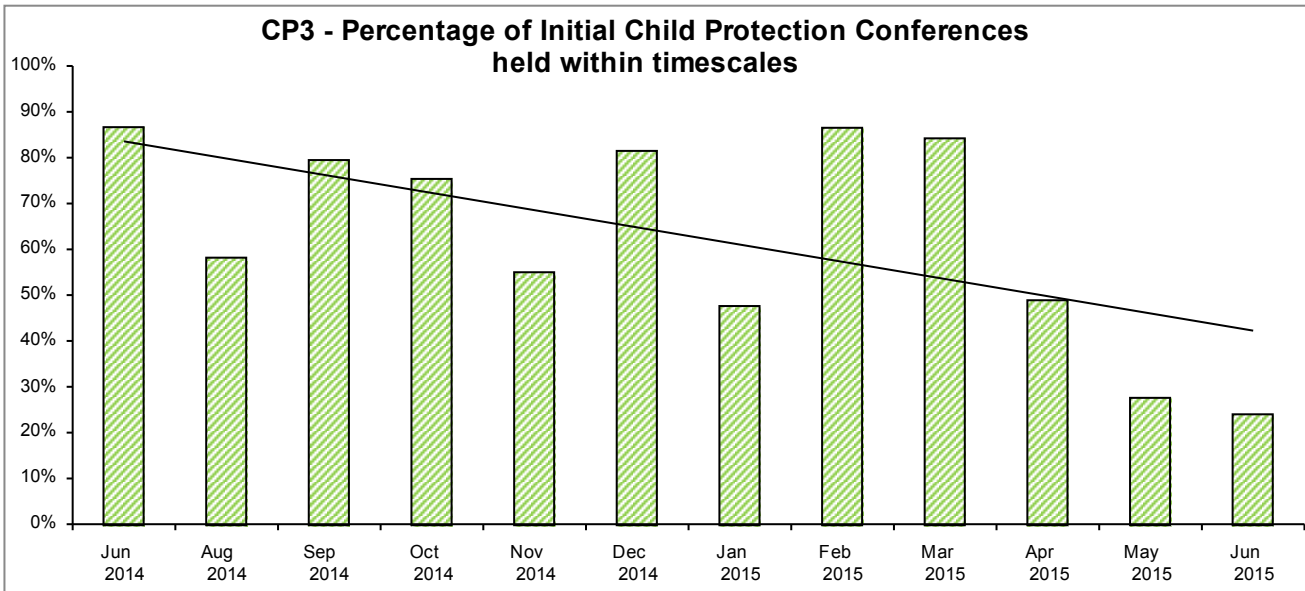
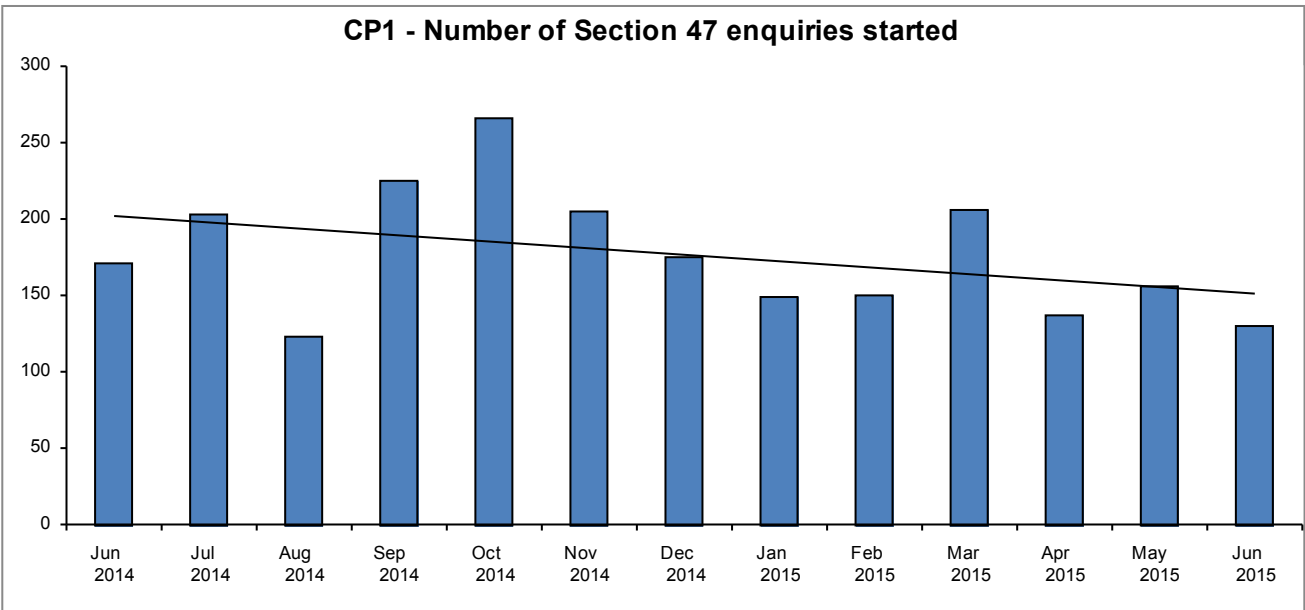
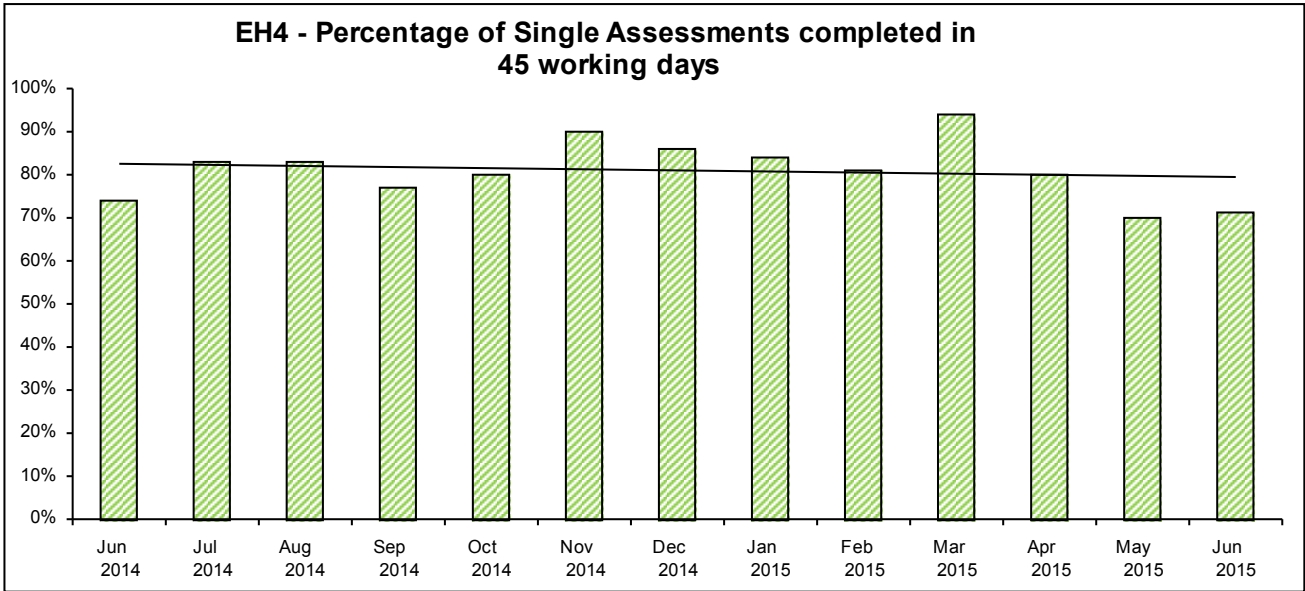


**M5 - Number of children receiving Universal Help services who are stepped up for Children In Need assessment (NOT UPDATED SINCE OCT 14)**

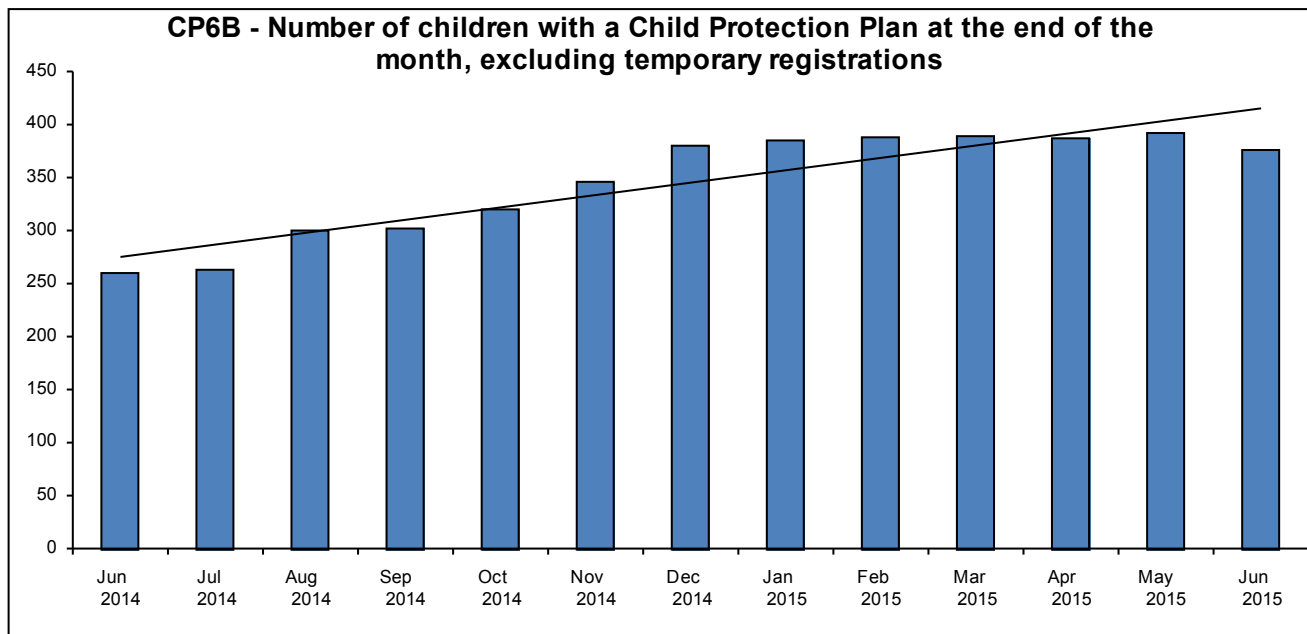
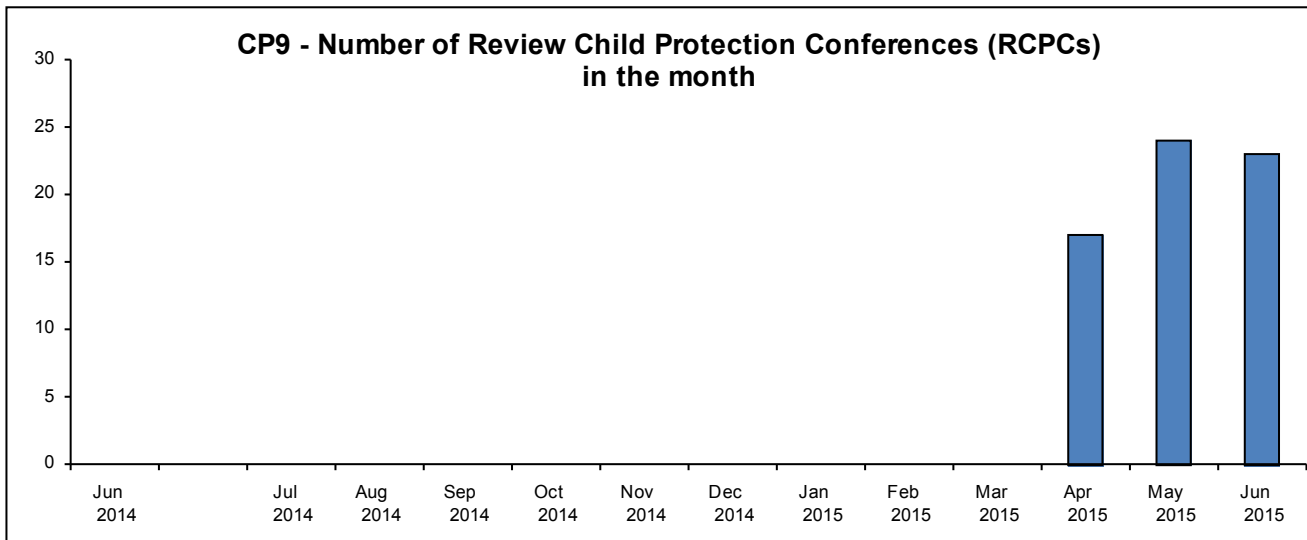
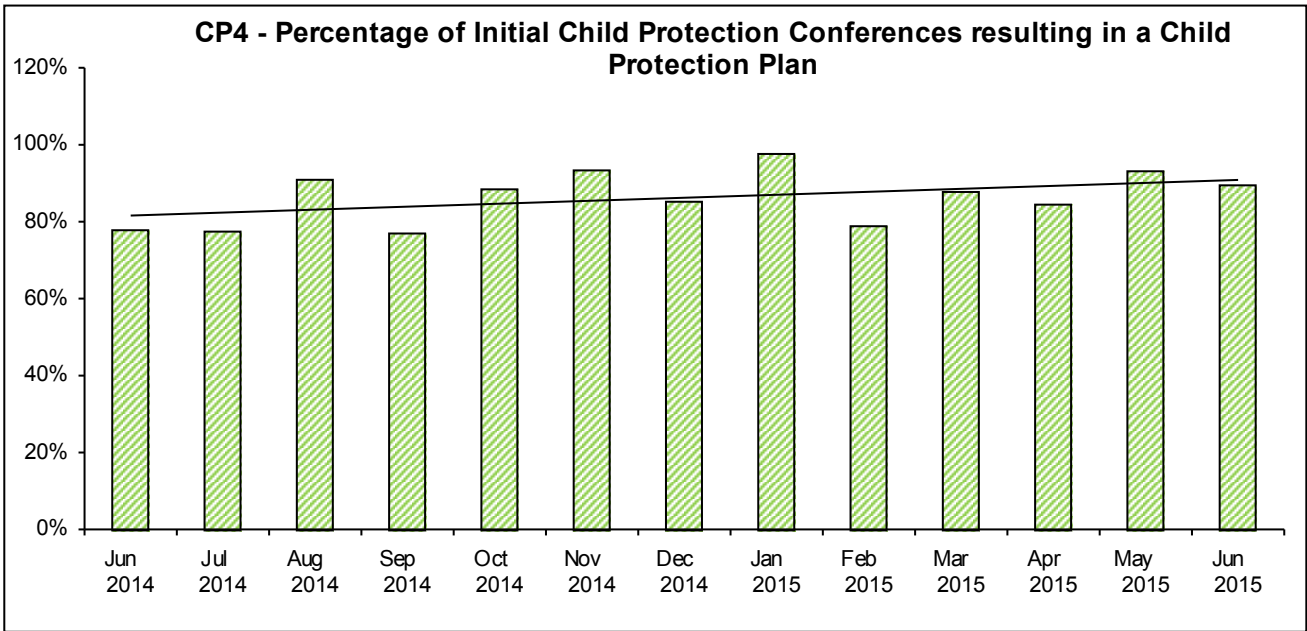




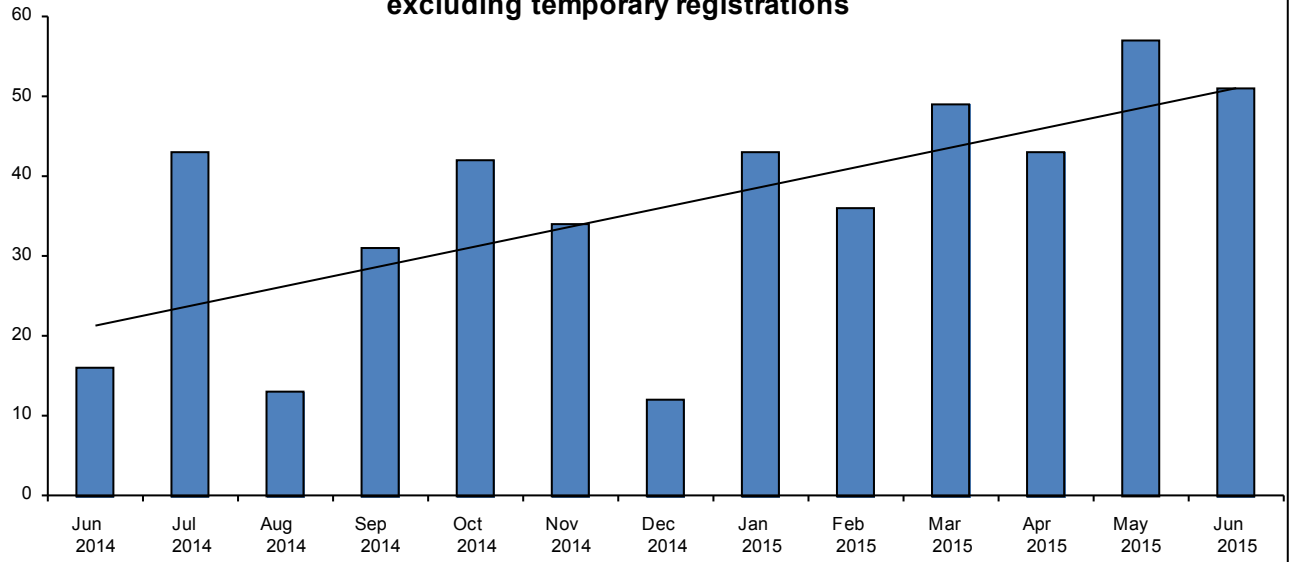




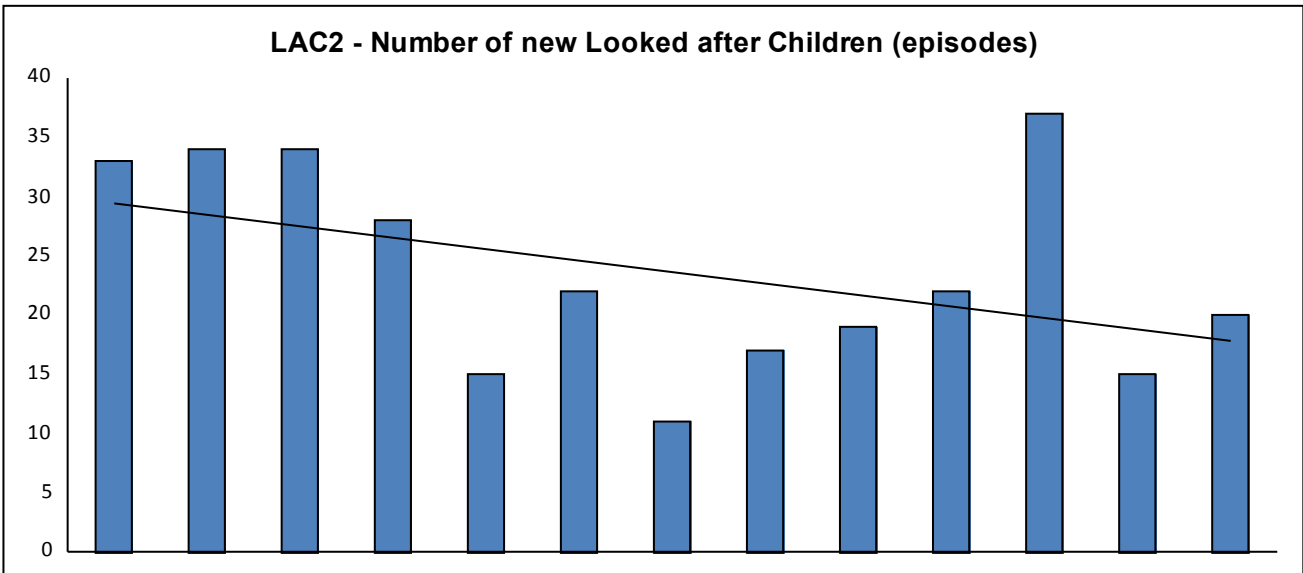
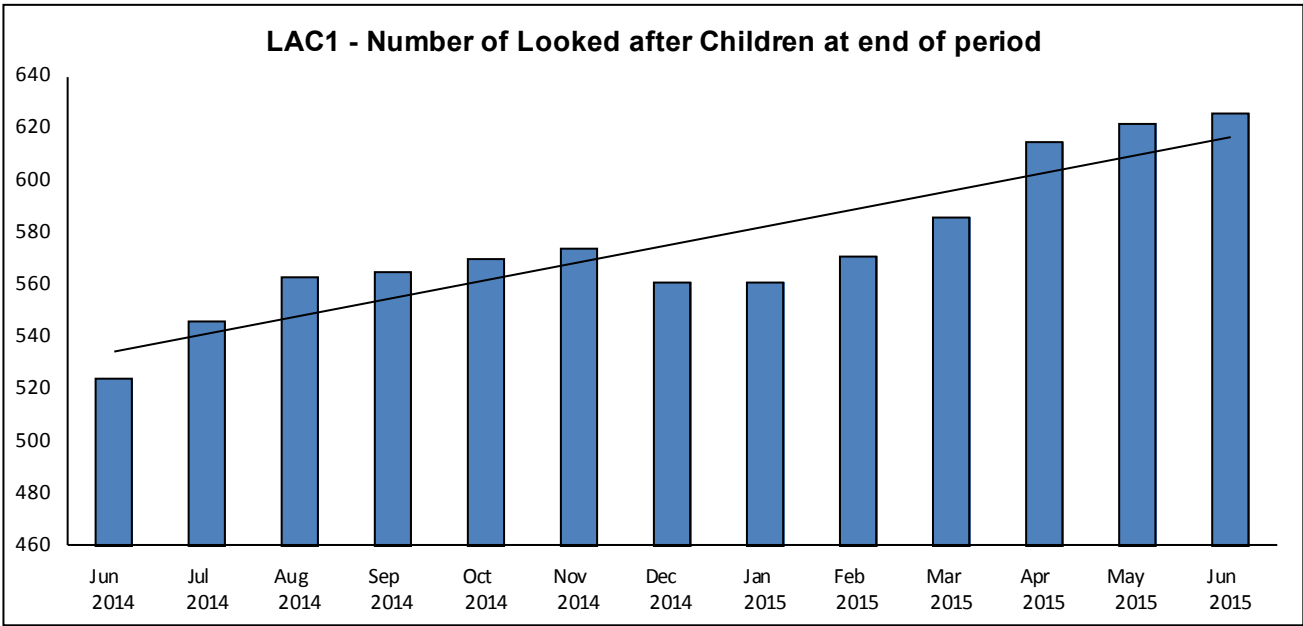
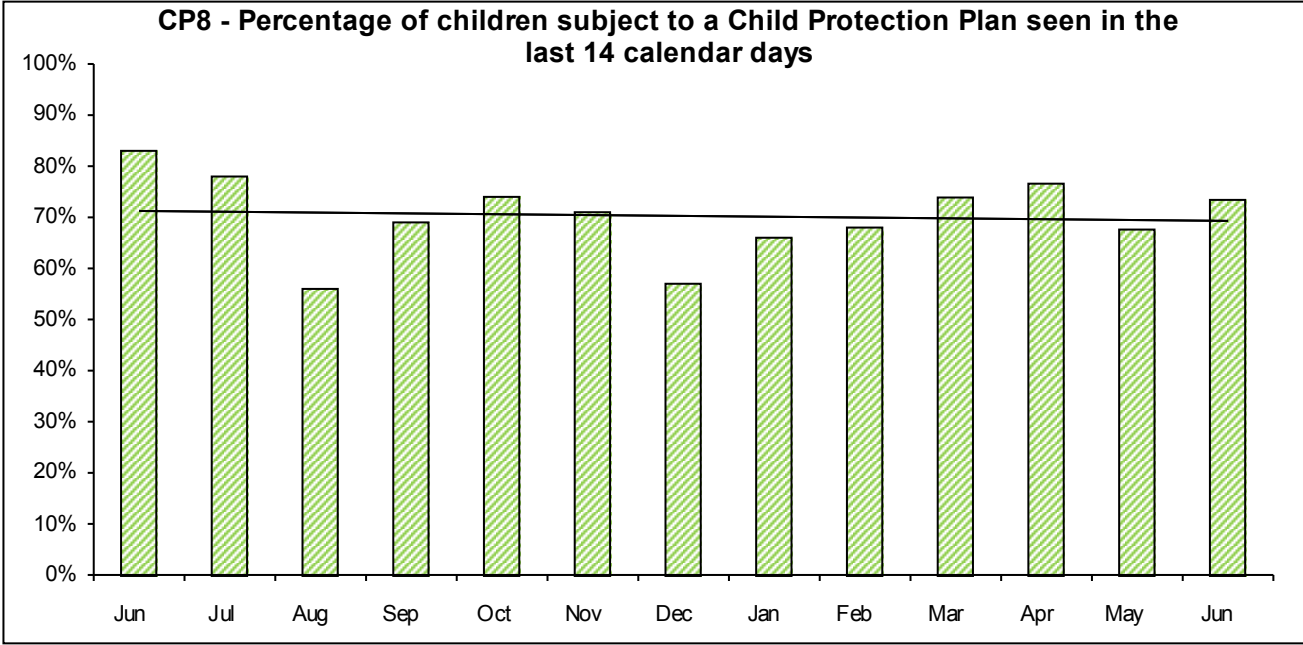
\_\_\_\_\_



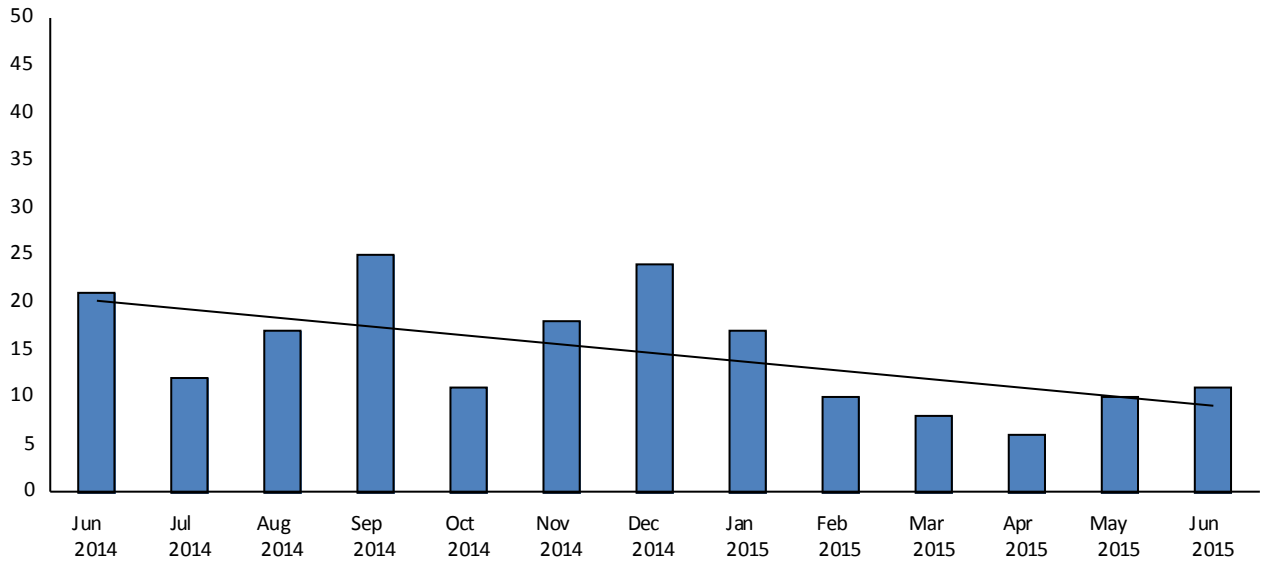
**CP7 - Number of ceasing Child Protection Plans,  
excluding temporary registrations**



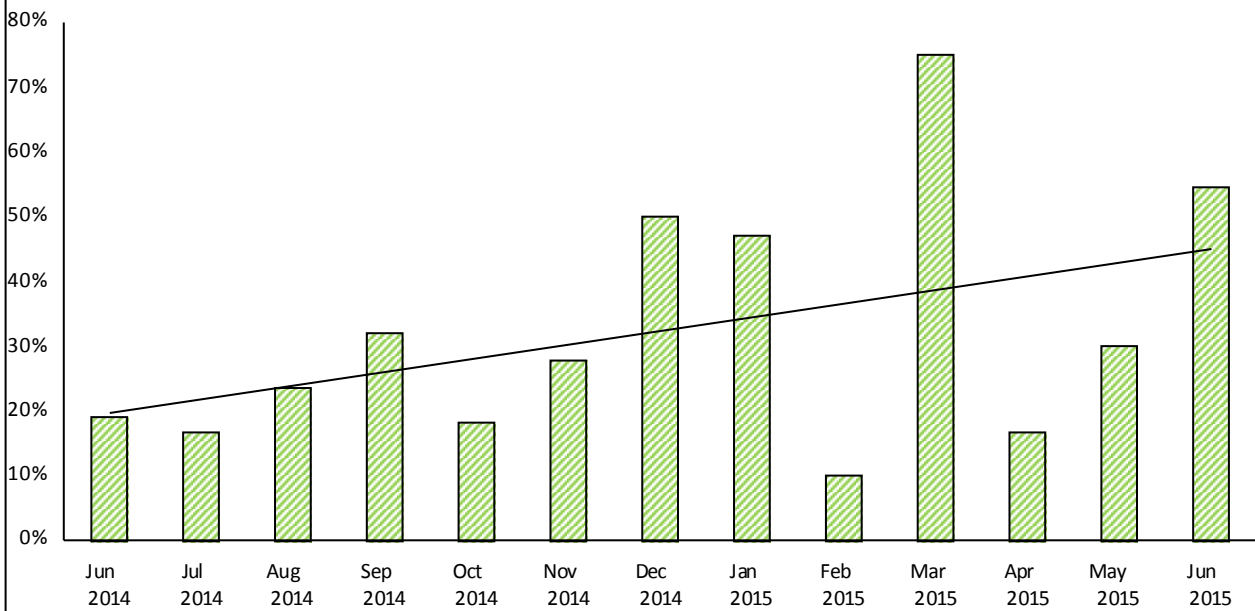




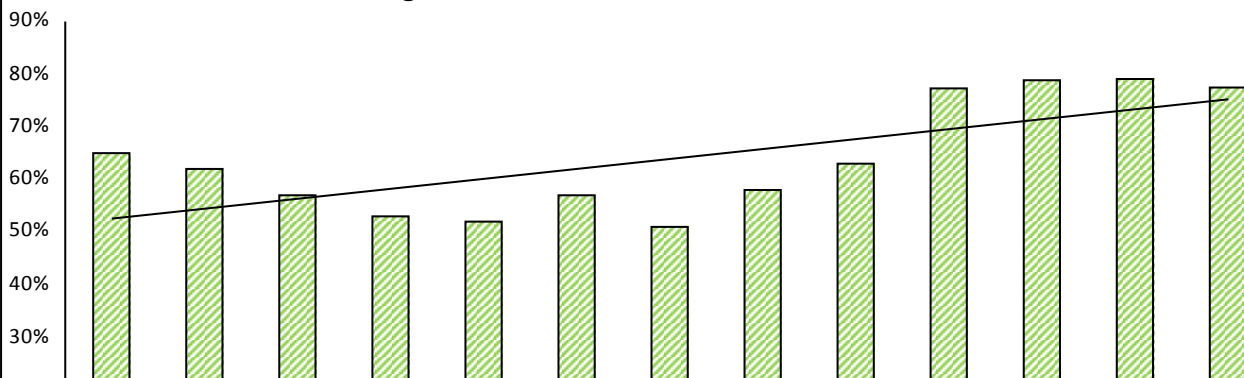
**LAC3 - Number of ceasing Looked after Children (episodes)**

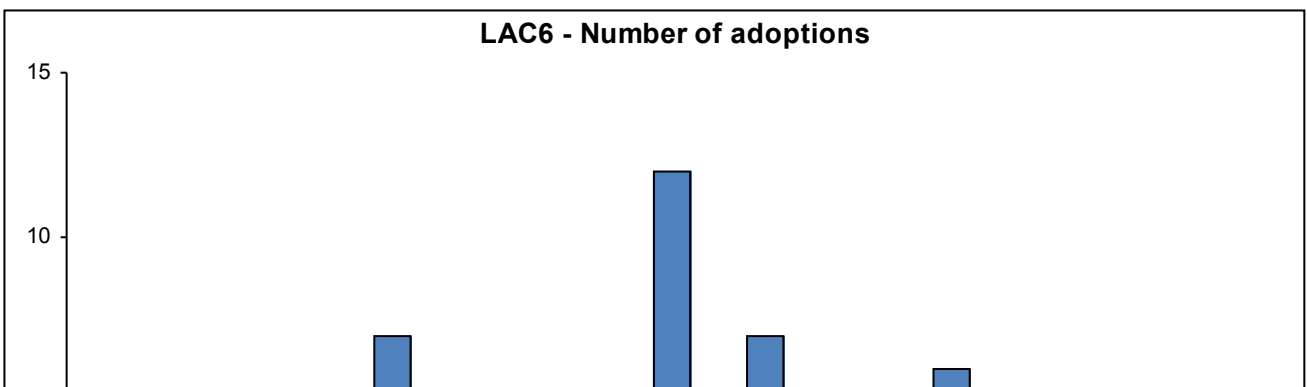
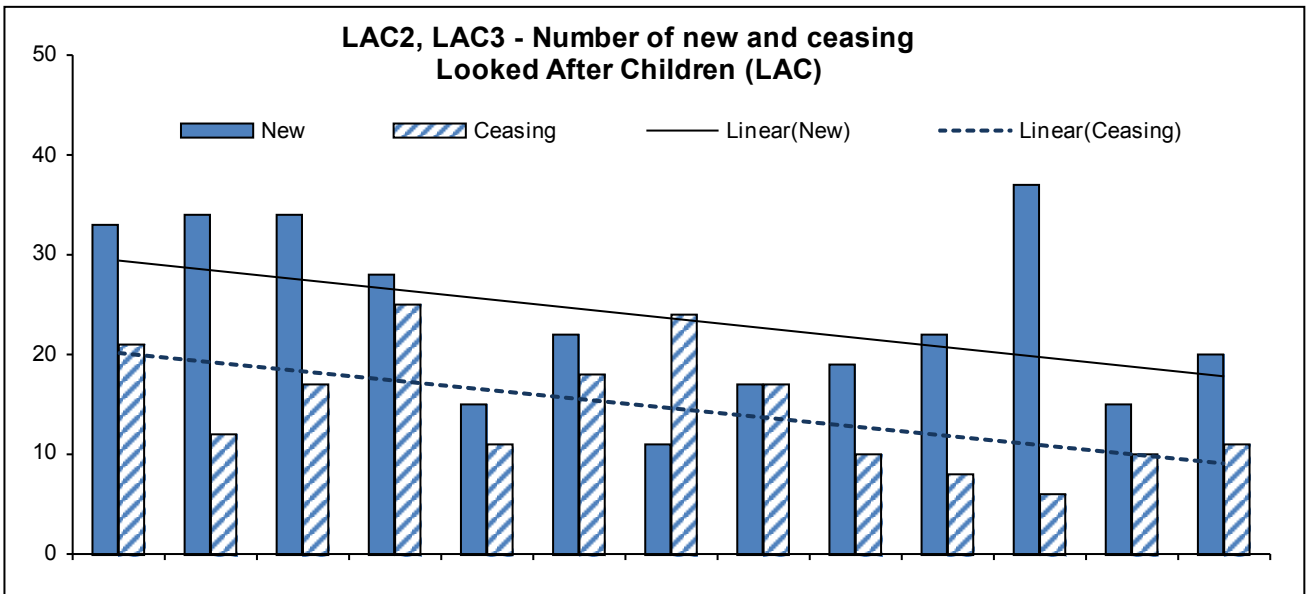
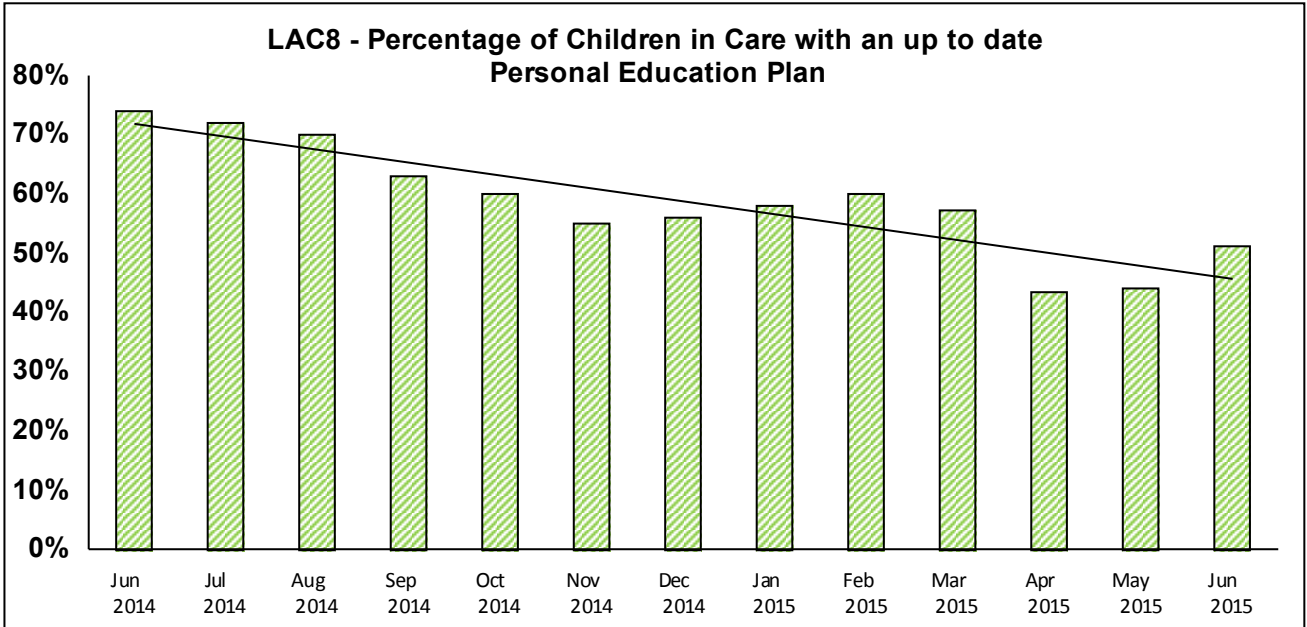
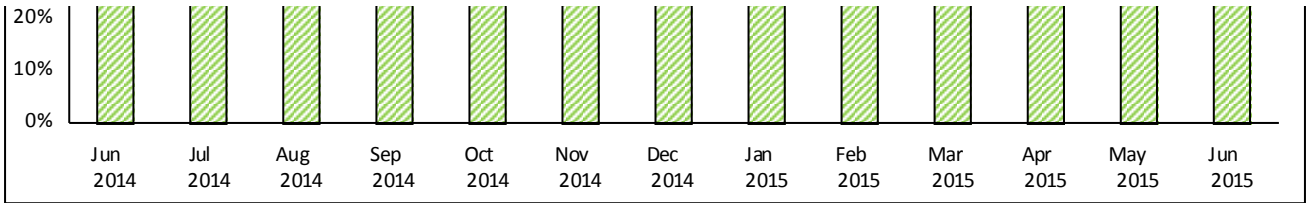


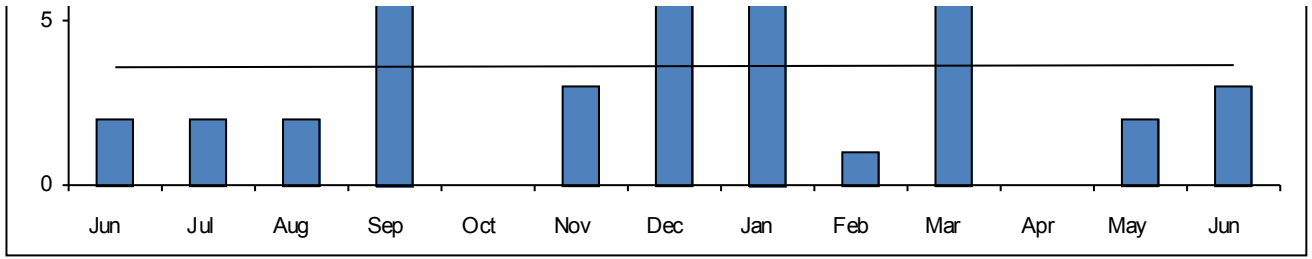
**LAC5 - Percentage of ceasing Children in Care where end reason was Special Guardianship Order (E43, E44) or adoption (E11, E12)**



**LAC7 - Percentage of Looked after Children visited within timescales**







| Children and Families Monthly Dataset   |                       |  |          |          |          |          |          |  |  |  |  |  |  |  |  |                                     |                  |                              |
|---|-----------------------|--|----------|----------|----------|----------|----------|--|--|--|--|--|--|--|--|-------------------------------------|------------------|------------------------------|
| Jun 2015  |                       |  |          |          |          |          |          |  |  |  |  |  |  |  |  |                                     |                  |                              |
| Qualitative measures:   |                       |  |          |          |          |          |          |  |  |  |  |  |  |  |  |                                     |                  |                              |
| Key to direction of travel:   |                       |  |          |          |          |          |          |  |  |  |  |  |  |  |  |                                     |                  |                              |
| Positive change   Similar   Negative change   Increase: 10% or more   ↑   Similar   →   Decrease: 10% or more   ↓ |                       |  |          |          |          |          |          |  |  |  |  |  |  |  |  |                                     |                  |                              |
| Measure Ref   | Performance Area      | Description  | Jun 2014 | Jul 2014 | Aug 2014 | Sep 2014 | Oct 2014 | Nov 2014                               | Dec 2014                               | Jan 2015                               | Feb 2015                               | Mar 2015                               | Apr 2015                               | May 2015                               | Jun 2015                               | % change from same period last year | 12 month average | Max. value in last 12 months |
| M1  | MASH                  | Number of contacts received (includes contacts that become referrals)  | 1303     | 1256     | 1031     | 1279     | 1241     | 1100                                   | 1055                                   | 1280                                   | 1207                                   | 1235                                   | 1132                                   | 1156                                   | 1363                                   | → 5                                 | 1195             | 1363                         |
| M2  | MASH                  | Number of new referrals of Children In Need  | 510      | 437      | 169      | 377      | 429      | 463                                    | 341                                    | 429                                    | 445                                    | 424                                    | 378                                    | 341                                    | 393                                    | ↓ (23)                              | 386              | 463                          |
| M3  | MASH                  | Percentage of all contacts that become new referrals of Children In Need                                       | 39%      | 35%      | 16%      | 29%      | 35%      | 42%                                    | 32%                                    | 34%                                    | 37%                                    | 34%                                    | 33%                                    | 29%                                    | 29%                                    | ↓ (26)                              | 32%              | 42%                          |
| M4  | MASH                  | Number of new referrals of children aged 13+ where child sexual exploitation was a                             | 10       | 3        | 2        | 3        | 15       | 7                                      | 7                                      | 9                                      | 9                                      | 5                                      | 7                                      | 6                                      | 7                                      | ↓ (30)                              | 7                | 15                           |
| M5  | MASH                  | Number of children receiving Universal Help services who are stepped up for Children In Need assessment        | 2        | 6        | 9        | 13       | 30       | Not updated pending data accuracy work | Not updated pending data accuracy work | Not updated pending data accuracy work | Not updated pending data accuracy work | Not updated pending data accuracy work | Not updated pending data accuracy work | Not updated pending data accuracy work | Not updated pending data accuracy work | n/a                                 | 15               | 30                           |
| EH3   | Assessments           | Number of Single Assessments completed   | 253      | 320      | 197      | 278      | 368      | 357                                    | 415                                    | 299                                    | 325                                    | 310                                    | 226                                    | 317                                    | 240                                    | → (5)                               | 304              | 415                          |
| EH4-QL  | Assessments           | Percentage of Single Assessments completed in 45 working days  | 74%      | 83%      | 83%      | 77%      | 80%      | 90%                                    | 86%                                    | 84%                                    | 81%                                    | 94%                                    | 80%                                    | 70%                                    | 71%                                    | → -4                                | 82%              | 94%                          |
| CP1   | Child Protection      | Number of Section 47 enquiries started   | 171      | 203      | 123      | 225      | 266      | 205                                    | 175                                    | 149                                    | 150                                    | 206                                    | 137                                    | 156                                    | 130                                    | ↓ (24)                              | 177              | 266                          |
| CP2   | Child Protection      | Number of Initial Child Protection Conferences held, including Transfer-Ins, excluding temporary registrations | 45       | 62       | 55       | 39       | 69       | 60                                     | 54                                     | 42                                     | 52                                     | 57                                     | 45                                     | 58                                     | 38                                     | ↓ (16)                              | 53               | 69                           |
| CP3-QL  | Child Protection      | Percentage of Initial Child Protection Conferences held within timescales                                      | 87%      | 47%      | 58%      | 79%      | 75%      | 55%                                    | 81%                                    | 48%                                    | 87%                                    | 84%                                    | 49%                                    | 28%                                    | 24%                                    | ↓ -72                               | 60%              | 87%                          |
| CP4   | Child Protection      | Percentage of Initial Child Protection Conferences resulting in a Child Protection Plan                        | 78%      | 77%      | 91%      | 77%      | 88%      | 93%                                    | 85%                                    | 98%                                    | 79%                                    | 88%                                    | 84%                                    | 93%                                    | 89%                                    | ↑ 15                                | 87%              | 98%                          |
| CP5-QL  | Child Protection      | Percentage of new Child Protection Plans (CPP) where child had previously been subject of a CPP at any time    | 16%      | 23%      | 11%      | 5%       | 10%      | 12%                                    | 2%                                     | 38%                                    | 8%                                     | 7%                                     | 20%                                    | 29%                                    | 12%                                    | ↓ (24)                              | 15%              | 38%                          |
| CP6B  | Child Protection      | Number of children with a Child Protection Plan at the end of the month, excluding temporary registrations     | 260      | 263      | 300      | 302      | 320      | 346                                    | 380                                    | 385                                    | 388                                    | 389                                    | 387                                    | 392                                    | 376                                    | ↑ 45                                | 352              | 392                          |
| CP7   | Child Protection      | Number of ceasing Child Protection Plans, excluding temporary registrations                                    | 16       | 43       | 13       | 31       | 42       | 34                                     | 12                                     | 43                                     | 36                                     | 49                                     | 43                                     | 57                                     | 51                                     | ↑ 219                               | 38               | 57                           |
| CP8-QL  | Child Protection      | Percentage of children subject to a Child Protection Plan seen in the last 14 calendar days                    | 83%      | 78%      | 56%      | 69%      | 74%      | 71%                                    | 57%                                    | 66%                                    | 68%                                    | 74%                                    | 77%                                    | 68%                                    | 73%                                    | ↓ -12                               | 69%              | 78%                          |
| LAC1  | Looked after Children | Number of Looked after Children at end of period   | 524      | 546      | 563      | 565      | 570      | 574                                    | 561                                    | 561                                    | 571                                    | 586                                    | 615                                    | 622                                    | 626                                    | ↑ 19                                | 580              | 626                          |
| LAC7-QL   | Looked after Children | Percentage of Looked after Children visited within timescales  | 65%      | 62%      | 57%      | 53%      | 52%      | 57%                                    | 51%                                    | 58%                                    | 63%                                    | 77%                                    | 79%                                    | 79%                                    | 77%                                    | ↑ 19                                | 64%              | 79%                          |

| Measure Ref | Performance Area      | Description  | Jun 2014 | Jul 2014 | Aug 2014 | Sep 2014 | Oct 2014 | Nov 2014 | Dec 2014 | Jan 2015 | Feb 2015 | Mar 2015 | Apr 2015 | May 2015 | Jun 2015 | % change from same period last year | 12 month average | Max. value in last 12 months |
|-------------|-----------------------|--|----------|----------|----------|----------|----------|----------|----------|----------|----------|----------|----------|----------|----------|-------------------------------------|------------------|------------------------------|
| LAC8-QL     | Looked after Children | Percentage of Looked after Children with an up to date Personal Education Plan   | 74%      | 72%      | 70%      | 63%      | 60%      | 55%      | 56%      | 58%      | 60%      | 57%      | 43%      | 44%      | 51%      | ↓ -31                               | 57%              | 72%                          |
| LAC2        | Looked after Children | Number of new Looked after Children (episodes)   | 33       | 34       | 34       | 28       | 15       | 22       | 11       | 17       | 19       | 22       | 37       | 15       | 20       | ↓ (39)                              | 23               | 37                           |
| LAC3        | Looked after Children | Number of ceasing Looked after Children (episodes)   | 21       | 12       | 17       | 25       | 11       | 18       | 24       | 17       | 10       | 8        | 6        | 10       | 11       | ↓ (48)                              | 14               | 25                           |
| LAC4-QL     | Looked after Children | Number of children leaving care for permanence (where end reason was SGO (E43, E44) or adoption (E11, E12))                                  | 4        | 2        | 4        | 8        | 2        | 5        | 12       | 8        | 1        | 6        | 1        | 3        | 6        | ↑ 50                                | 5                | 12                           |
| LAC5-QL     | Looked after Children | Percentage of children leaving care for permanence (where end reason was Special Guardianship Order (SGO) (E43, E44) or adoption (E11, E12)) | 19%      | 17%      | 24%      | 32%      | 18%      | 28%      | 50%      | 47%      | 10%      | 75%      | 17%      | 30%      | 55%      | ↑ 186                               | 33%              | 75%                          |

**Data notes**

**Single Assessments** - all figures exclude SAs recorded as the vehicle for the RCPC report. The full year figures have been recalculated using 45 working days as the timescale.

**CiN and EH numbers** - withdrawn pending data accuracy work. Numbers for previous months may not be correct.

**Step-up numbers** - may also be affected by data accuracy issues.

**LAC8** - Children in care for more than 28 days, over the age of 2 ½ with a PEP in the last six months are considered to have a valid PEP.